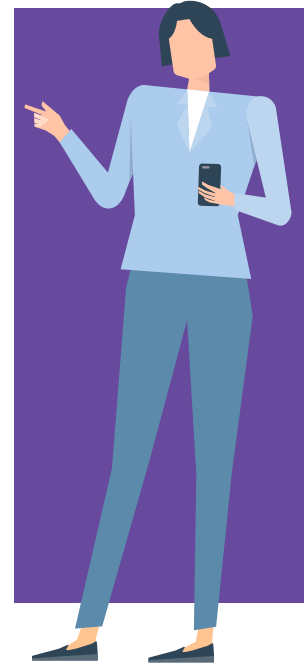


Project #14257 CBMS MA Child Allocation Updates

The MA Financial page in CBMS Wrap-Up has 4 new fields to display how the **Child Allocation** deductions are applied to Earned and Unearned Income.

- *Unearned Child Allocation*
- *Gross Unearned After Child Allocation*
- *Earned Child Allocation*
- *Gross Earned Child Allocation*

CBMS will auto populate the amount in these news fields on the MA Financial page when there is a Child Allocation deduction applied for Medicaid. Child Allocation is deducted from the parent's gross income before standard deductions for Non-MAGI programs including WAwD with LTC. Child allocation is not applicable to the HCBS waivers or the LTC programs.



There are 4 new fields in CBMS in Wrap Up:

A screenshot of the CBMS MA Financial Eligibility page. The page has a blue header with navigation links like 'Home', 'Search', 'Application', etc. Below the header is a navigation bar with 'WrapUp' selected. The main content area is titled 'Income Test' and contains several input fields. Four fields are highlighted with red boxes: 'Unearned Child Allocation', 'Gross Unearned After Child Allocation', 'Earned Child Allocation', and 'Gross Earned After Child Allocation'. Other fields include 'Gross Unearned Income', 'MAGI 5% Disregard', 'General Income Disregard', 'Net Unearned Income', 'Gross Earned Income', 'Annual Income Used', 'Excess General Income Disregard', 'Total Net Income', 'Child Allocation', 'Net Income Standard', 'Total Expenses', 'Income Test Result', and 'Total Deductions'. There are also radio buttons for 'Yes' and 'No' for 'Annual Income Used' and 'IEVS Income Used'.